

JORDAN M. HOLLOWAY

STRING TRIO No. 1
"PATHÉTIQUE"
2017, op. 2

VIOLA



MULTAPAX EDITION

Viola

STRING TRIO NO. 1

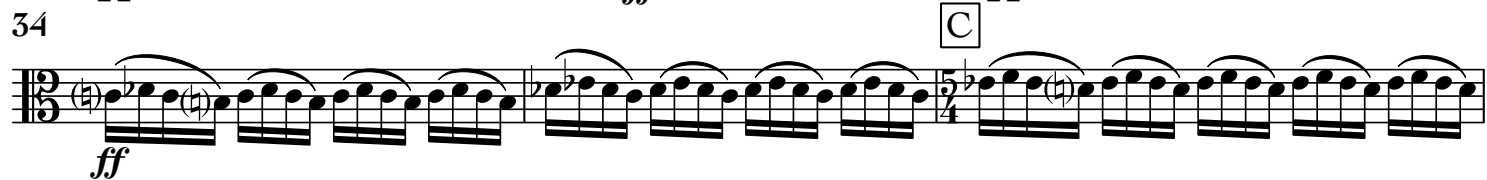
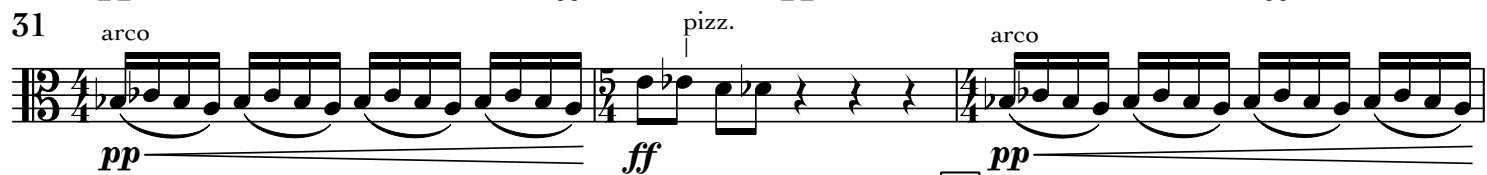
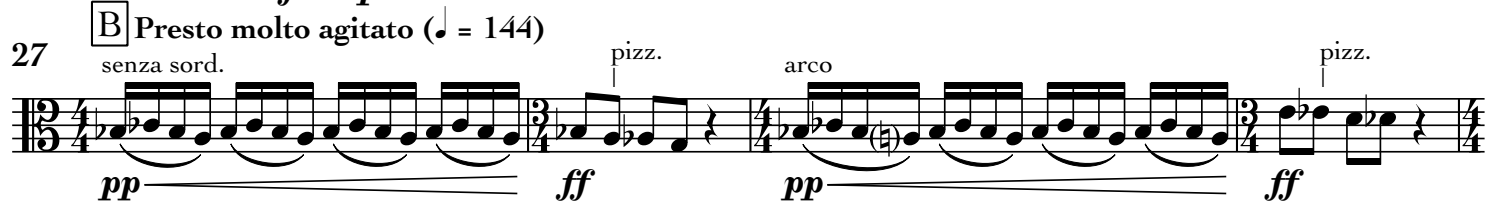
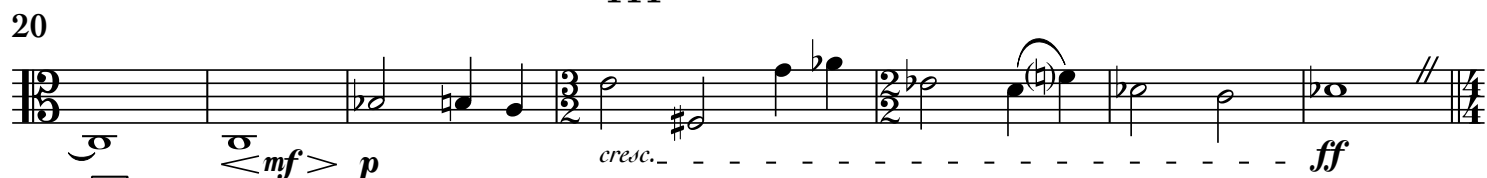
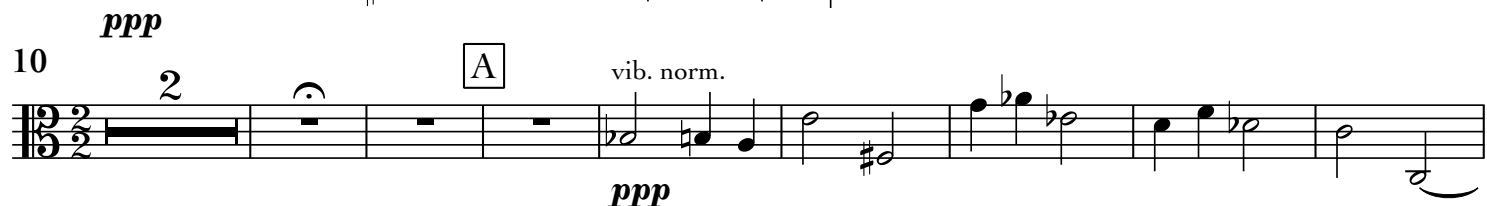
"PATHÉTIQUE"

Jordan M. Holloway
Op. 2

Larghissimo ($\text{♩} = 20$)

I. PRELUDE

con sord.
non vib.



II. WALTZ

Allegretto tranquillo (♩. = 56)

sul tasto

(2) (3) (4) (5) (6) (7) (8) (9)
 10 *p*₍₁₀₎ [A]
 19
 28 [B] (2) (3) (4)
 37 (5) (6) (7) (8) (9) (10) (11) (12) (13)
 46 (14) (15) (16) [C]
 55 *mp sub*
 64
 73 *p sub* [D]
 82 (2) (3) (4) (5) (6) (7) (8) *pp* sul ord. (2)
 91 (3) (4) (5) (6) (7) (8) [E] *mf sub*
 100 *p sub*
 109

118



126



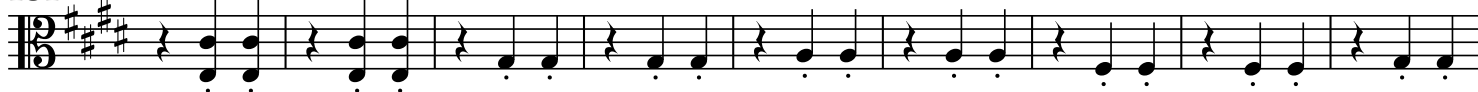
135



143



151



160

169 **[H] Prestissimo** ($\text{♩} = 92$)

178



188



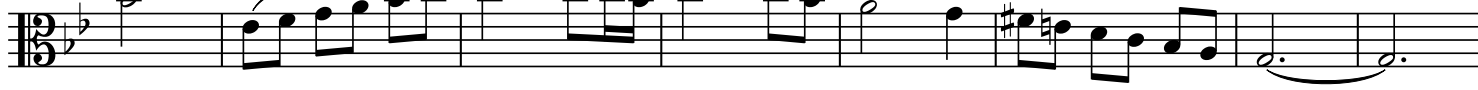
198



207

217 **[J] Moderato** ($\text{♩} = 60$)

225



233 15 K

254 *ff* rit.

262 L Tempo I (♩. = 56)

272 *più f*

284 M *p*

294 *ff* rit.

305 N Adagio (♩. = 44)

314 *f sempre molto espressivo* O

323 *p sub*

332

341

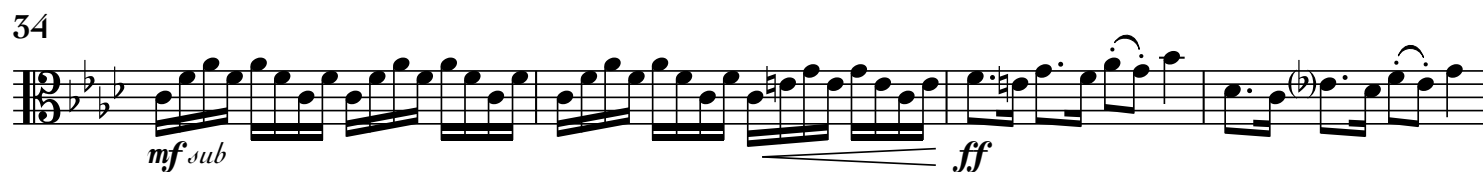
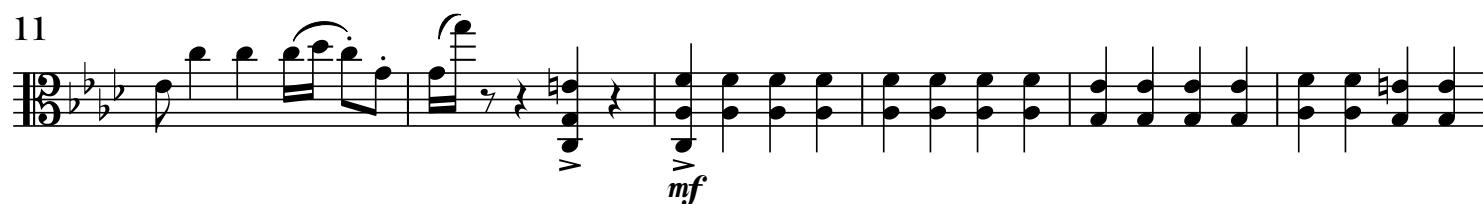
350 *cresc.* P rit. al fine 4 *mp morendo*

360 5 non vib. *pp*

Left blank for a page turn.

III. SCHERZO

Allegro assai (♩ = 138)



47



50



53

E



58



64

poco accel.

69

F Presto furioso (♩ = 152)



73

G



78



82

H

*cresc. al fine*

87



IV. ARIA

Andante semplice (♩ = 72)

Musical score for IV. ARIA, Andante semplice (♩ = 72). The score is written in 3/8 time and consists of 28 measures. The key signature has two flats (B-flat and E-flat). The tempo is marked Andante semplice (♩ = 72). The score is divided into measures 1 through 28, with measures 1-3, 4-6, 7-9, 10-12, 13-15, 16-18, 19-21, 22-24, and 25-27 grouped by slurs. Measure 16 is marked with a box containing 'B'. Measure 17 is marked with a box containing 'A'. Measure 18 is marked with a box containing 'B'. Measure 19 is marked with a box containing 'A'. Measure 20 is marked with a box containing 'B'. Measure 21 is marked with a box containing 'A'. Measure 22 is marked with a box containing 'B'. Measure 23 is marked with a box containing 'A'. Measure 24 is marked with a box containing 'B'. Measure 25 is marked with a box containing 'A'. Measure 26 is marked with a box containing 'B'. Measure 27 is marked with a box containing 'A'. Measure 28 is marked with a box containing 'B'.

Dynamics and markings include:

- p* (piano) at measure 1.
- cresc.* (crescendo) at measure 13.
- mf* (mezzo-forte) at measure 16.
- p* (piano) at measure 17.
- più f* (più forte) at measure 18.
- mf* (mezzo-forte) at measure 19.
- cresc.* (crescendo) at measure 28.

The score is divided into measures 1 through 28, with measures 1-3, 4-6, 7-9, 10-12, 13-15, 16-18, 19-21, 22-24, and 25-27 grouped by slurs. Measure 16 is marked with a box containing 'B'. Measure 17 is marked with a box containing 'A'. Measure 18 is marked with a box containing 'B'. Measure 19 is marked with a box containing 'A'. Measure 20 is marked with a box containing 'B'. Measure 21 is marked with a box containing 'A'. Measure 22 is marked with a box containing 'B'. Measure 23 is marked with a box containing 'A'. Measure 24 is marked with a box containing 'B'. Measure 25 is marked with a box containing 'A'. Measure 26 is marked with a box containing 'B'. Measure 27 is marked with a box containing 'A'. Measure 28 is marked with a box containing 'B'.

31 *rit.* **C** a tempo *f* *f agitato*

37 *rit.* **D** Lento (♩ = 40) *p* *f* *p sub*

47 *p tranquillo* *mf*

54 **E** Andantino lacrimoso (♩ = 80) *mf*

58 *cresc.*

61 **F** *p sub*

65 **G** *f* *mf* *f*

74 *ff*

82 *rit.* **H** Largo (♩ = 44) *fff* *ffffp*

88 *ppp morendo* *rit.*

V. ELEGY

Adagio (♩ = 54)
con sord.
non vib.

